

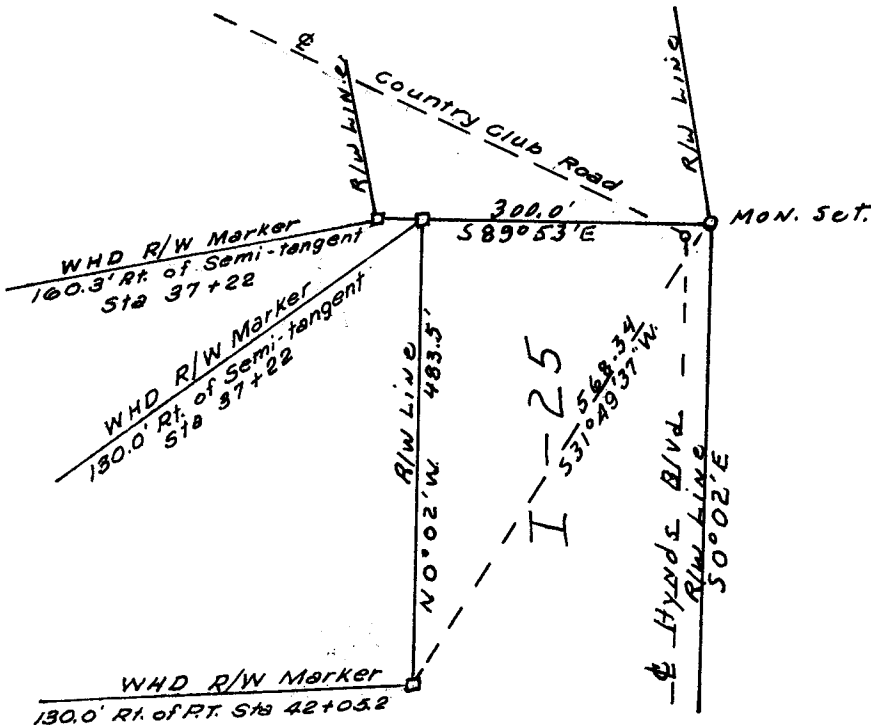
CERTIFIED LAND CORNER RECORDATION

<p>LOCATION</p> <p>S. 25</p> <p>T. 14 N.</p> <p>R. 67 W.</p> <p>6th P. M.</p>	<p>DESCRIPTION OF CORNER EVIDENCE FOUND, AND ORIGINAL RECORD (If known)</p> <p>U. S. Military marker F. E. Warren AFB no. 23. No evidence of monument found, obliterated corner monument re-established from Wyoming Highway Department data.</p> <p>No GLO records.</p>
---	--

DESCRIPTION OF MONUMENT AND ACCESSORIES ESTABLISHED TO PERPETUATE THE ORIGINAL LOCATION OF THIS CORNER:

Set 1½" diameter x 30" long iron pipe (concrete filled) with brass cap.

SKETCH, WITH COURSE AND DISTANCE TO ADJACENT CORNER IF DETERMINED IN THIS SURVEY.
(May Sketch or Paste Reproduction on Reverse Side.)



Scale: 1" = 200'

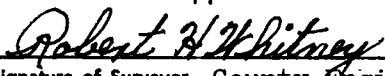
Brass cap set 4" below road surface.

T. 14 N., R. 67 W.

U. S. Mon. No. 23

Wyoming P. E. 364 1973

I, Robert H. Whitney certify that I have carefully performed or ~~checked~~ the work done on the diagrammed corner as reported on this recordation form and approve the same.


 Signature of Surveyor County Engineer Wyoming P. E. 364
 Registration No.

STATE OF WYOMING,
Office of Clerk and Recorder,
County of Laramie

This "corner record" was filed for record on the 14 day of December, 1973, was noted on the cross-index plat and is assigned page No. _____, in book No. _____.


 County Official

Cross Index No. _____	T. _____	R. _____	Mer. _____
_____	T. _____	R. _____	Mer. _____
_____	T. _____	R. _____	Mer. _____
_____	T. _____	R. _____	Mer. _____
_____	T. _____	R. _____	Mer. _____
_____	T. _____	R. _____	Mer. _____
_____	T. _____	R. _____	Mer. _____

photographed
Indexed 7
Posted 1
Assessor X

This instrument was filed for record
at 9:15 o'clock A. M. on the
14 day of December
A. D. 1973 and duly recorded in
Book on page

[Handwritten Signature]

County Clerk & Ex-Officio Register of Deeds
By.....

The State of Wyoming
County of Laramie

This instrument was filed for record
at o'clock M. on the
..... day of
A. D. 19..... and duly recorded in
Book of page

[Handwritten Signature]

County Clerk & Ex-Officio Register of Deeds
Deputy